



Lanna Living, Redefined. Discover Thailand's hidden gem.

Visama Explorer Nan was born from the belief that travel should be both life-enriching and regenerative. Created by the team of VHG Asia — a hospitality company dedicated to tented camps and eco-lodges that sustain culture, protect nature, and uplift local communities — Visama Nan opens a new chapter in luxury: one defined by authenticity, purpose, and meaningful connection.

Nan, with its timeless valleys and Thai Lue traditions, became the natural setting for our first Explorer retreat — smaller in scale, closer to nature, and more intimate in spirit. With only eight canvas tents, Visama Explorer Nan was designed as a place where guests can slow down, learn from artisans, enjoy cuisine grown nearby, and leave a positive imprint on the community that hosts them.

Our story is not just about hospitality. It is about conviction: that meaningful travel can inspire transformation — for the traveler, for the community, and for the landscapes we all share. This is why Visama exists — and why we invite you to explore with us.



Travel Information

- **Bo Kluea Salt Wells:** Distance 25 KM Travel time 40 minutes
- **Sapan Waterfall:** Distance 20 KM Travel time 30 minutes
- **Khun Nan National Park:** Distance 20 KM Travel time 30 minutes
- **Doi Phu Kha National Park:** Distance 45 KM Travel time 1 hour
- **Sapan Village:** Distance 20 KM Travel time 30 minutes
- **Wa River Rafting:** Distance 47 KM Travel time 1 hour 15 minutes
- **Nan City Center:** Distance 90 KM Travel time 2 hours
- **Nan Nakhon Airport:** Distance 95 KM Travel time 2 hours 10 minutes

Transportation: Nan Nakhon Airport (NNT)

Flight Frequency (approximate):

- Per day: 3 direct flights (08:50 / 10:25 / 19:05)
- Per week: 21 flights
- Per month: 90–93 flights

Airlines Operating to Nan:

- Thai AirAsia (FD) – DMK > NNT
- Nok Air (DD) – DMK > NNT

Flight Duration:

- Bangkok to Nan: Approx. 1 hour 20 minutes (non-stop)
- Chiang Mai to Nan: No direct commercial flights at the moment (travel by private car or van, approx. 4.5–5 hours)
- Other regions (Phuket, Krabi, etc.): Connecting flights through Bangkok

Room Types

Creek View Safari Tent

Immerse yourself in nature without sacrificing comfort. Nestled beside a gentle stream, this luxury safari tent offers a serene escape where you can unwind to the soothing sounds of flowing water. Blending adventure with elegance, it provides a spacious retreat to relax, recharge, and take in the beauty of the mountains.

Size: 36 Sqm & 12 Sqm Covered Veranda

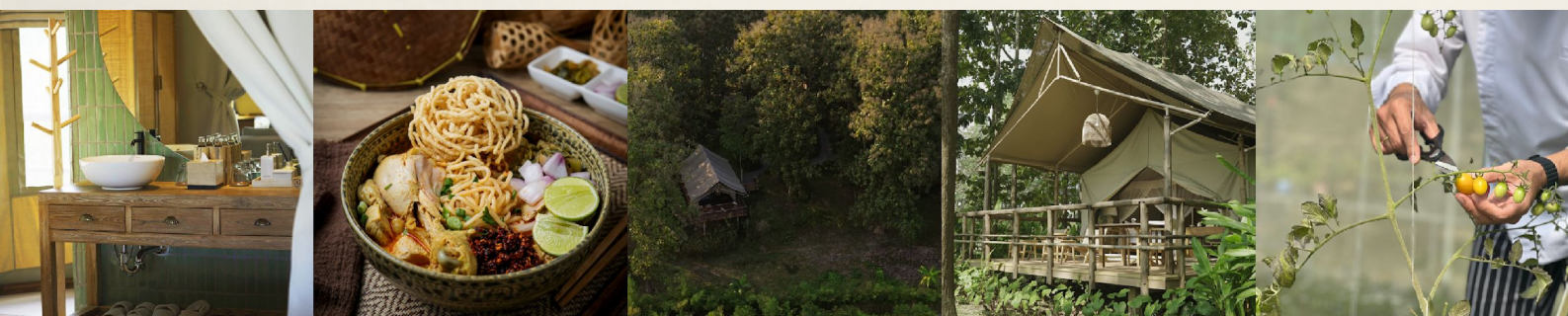
- Luxury Standard Fit-out
- Intent Bathroom (Rain Shower)
- King Size Bed
- Seamlessly blends adventure and luxury
- Provides an extraordinary safari experience

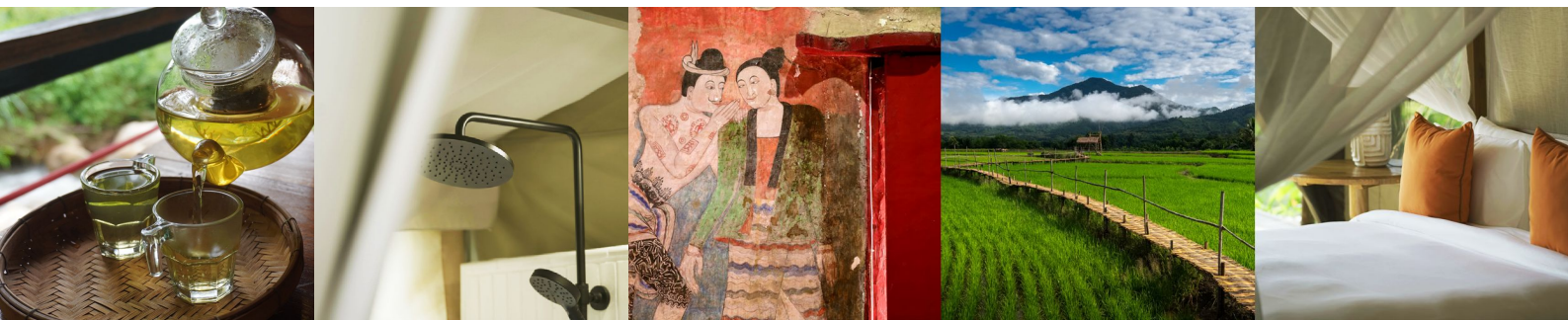
Mountain View Safari Tent

Wake up to breathtaking views of Bo Kluea's lush green mountains from the comfort of your luxury safari tent. Perched in a serene setting, it offers the perfect balance of adventure and relaxation. Unwind on your private veranda, soak in the fresh mountain air, and experience nature's beauty in ultimate comfort.

Size: 36 Sqm & 12 Sqm Covered Veranda

- Luxury Standard Fit-out
- Intent Bathroom (Rain Shower)
- King Size Bed
- Seamlessly blends adventure and luxury
- Provides an extraordinary safari experience





Dining & Facilities

Monmanee Restaurant

Savor authentic Tai Lue & Thai Lanna cuisine crafted by local chefs using traditional recipes and organic ingredients, offering a rich cultural and culinary experience

The Ambalama

Join us at sunset for fireside storytelling by writers, historians, and local voices, reviving ancient traditions of shared tales. Stay after dark for "Cinema Paradiso," our open-air movie nights under the stars at the Ambalama.

Homegrown Organic Garden

Rooted in sustainability, our organic garden at Visama Explorer Nan will provide fresh herbs and vegetables for our kitchen, connecting guests to nature through farm-to-table dining and hands-on experiences.

Parking

Spacious and convenient parking is available for all guests, offering easy access and peace of mind throughout your stay.

Visama Explorer Experiences

- **Northern Thai Cuisine Cooking Class**
Learn to cook with Visama's chefs using local organic ingredients
- **Bike & Hike Adventure**
Explore scenic trails and villages on a mountain bike adventure
- **Art & Craft Workshop**
Relax and recharge with creative activities
- **Union of Body & Mind**
Find your inner peace with a refreshing yoga session
- **A Tree Planting Program**
Join our tree-planting initiative with the local community

Visama Signature Excursions

- Sapan Waterfall
- Khun Nan National Park
- Doi Phu Kha National Park
- Sin Thao Rock Salt Pond & Bo Kluea Rock Salt Wells
- Wat Ming Mueang Temple
- Wat Phra That Chang Kham Worawihan
- Wat Phumin (Nan's Most Iconic Temple)
- Nan Walking Street (Kad Khuang Muang Nan)

