



*Visama*

**EXPLORER**

Nan

[visamatentedcamps.com](http://visamatentedcamps.com)





**Lanna Living, Redefined.  
Discover Thailand's hidden gem.**

Welcome to Visama Explorer Nan, Thailand's premier eco-luxury tented camp, where the spirit of Lanna living meets mindful adventure. Nestled in the tranquil highlands of Nan province, our sanctuary blends comfort with culture, offering a welcoming soulful journey into authentic northern Thai life.





At Visama Explorer Nan, we celebrate the beauty of culture, nature, and human connection. Inspired by Lanna and Thai Lue traditions, our eco-luxury retreat in Nan offers a soulful approach to travel — respectful, mindful, and deeply authentic.

Every detail is rooted in purpose. From our locally sourced cuisine and sustainable design to workshops with village artisans, we exist to help the community, protect heritage, and inspire transformation through travel.



# Our Luxury Tents

## Creek View Safari Tent

Immerse yourself in nature without sacrificing comfort. Nestled beside a gentle stream, this luxury safari tent offers a serene escape where you can unwind to the soothing sounds of flowing water. Blending adventure with elegance, it provides a spacious retreat to relax, recharge, and take in the beauty of the mountains.





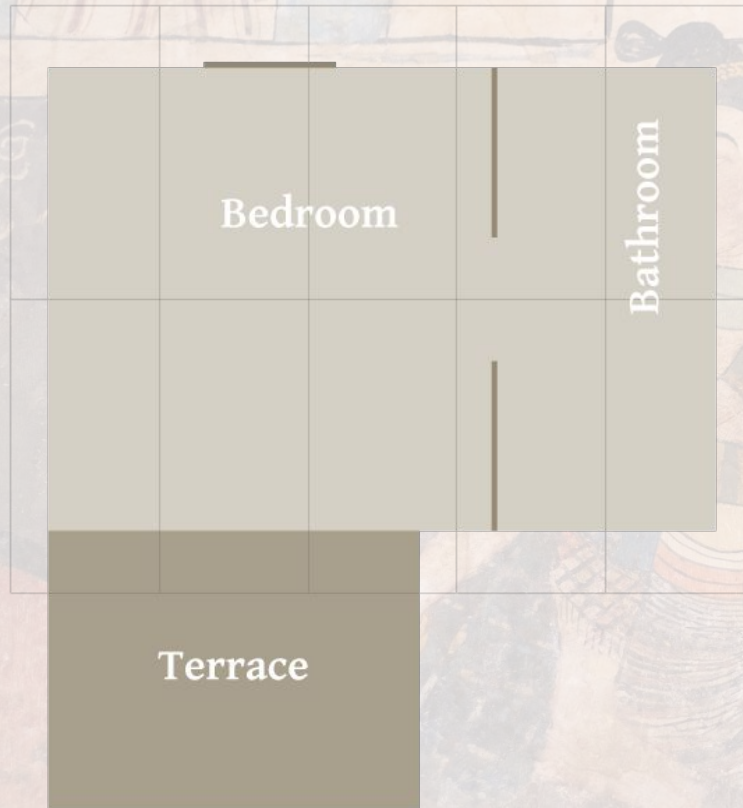
## Mountain View Safari Tent

Wake up to breathtaking views of misty and lush green mountains from the comfort of your luxury safari tent. Perched in a serene setting, it offers the perfect balance of adventure and relaxation. Unwind on your private veranda. Soak in the fresh mountain air. Experience nature's beauty in comfort.





# Visama Tent Layouts



- Size: 36 Sqm & 12 Sqm Covered Veranda
- Luxury Standard Fit Out
- In-tent Bathroom (Rain Shower)
- King Size Bed
- Seamlessly blends adventure and luxury
- Provides an extraordinary safari experience



# In Tent Amenities



Telephone



Electric Kettle



Safety Deposit  
Box



Towel



Hair Dryer



Umbrellas



Rain Shower



First Aid support  
from the  
Reception



Refrigerator/  
Mini Bar



French Press for  
Locally Grown  
Arabica Coffee



Glass bottled  
drinking water



His and Hers  
Bathrobes &  
Slippers



Toiletries



Private  
Ecofriendly  
Shopping Bag



Flashlight



Wifi



# Dining & Facilities



**MonManee  
Restaurant**



**The Ambalama  
The Gathering Place**



**Homegrown  
Organic Garden**





## MonManee Restaurant

*“The word MonManee represents the precious beautiful gems. It’s rather all about the preciousness of great quality, artisan, and craftsmanship.”*

*Taste authentic Tai Lue & Thai Lanna cuisine crafted by local community chefs using traditional recipes, organic ingredients from partner farms, and cooking methods passed down through generations, creating dining experiences that nourish both body and cultural understanding.*





## The Ambalama Gathering Place

The ancient cultures of the world embraced stories of years gone by around the fireplace. Join us by romantic fire light to hear stories from inspired writers, historians, and storytellers. Meet at The Ambalama for daily sunsets. Look out for Cinema Paradiso – movies under the stars around the Ambalama.





## Homegrown Organic Garden

Rooted in sustainability, our organic garden at Visama Explorer Nan will provide fresh herbs and vegetables for the kitchen, connecting guests to nature through farm-to-table dining and hands-on culinary experiences.



# Visama Explorer Nan Experiences

Cultural, Heritage, Culinary Arts and Outdoor Adventures in Northern Thailand



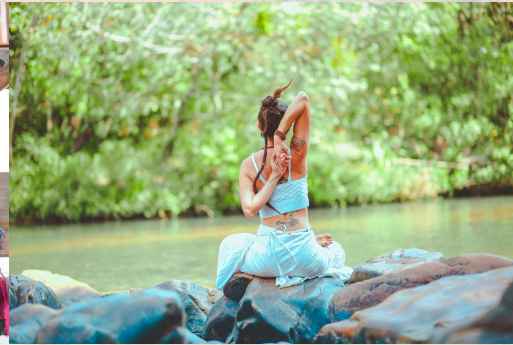
**Northern Thai Cuisine  
Cooking Classes**



**Bike & Hike  
Adventures**



**Art & Craft  
Workshops**



**Union of  
Body & Mind**



**Tree Planting  
Program**





## Northern Thai Cuisine Cooking Classes

Elevate your culinary skills with the help of our VISAMA chef's team who specialize in using organic local food produce to create unforgettable dining sensations. Learn from northern Thai culinary experts. Impress your friends and family with your specialty dishes.





## **Bike & Hike Adventures**

If you are looking for an adventurous mountain bike tour, the scenery around Visama Explorer Nan is beautiful. The tour takes you through diverse landscapes. The natural beauty surrounding the route is breathtaking. Discover photogenic valleys covered with rice fields and local villages of great natural charm.





## Art & Craft Workshop

At Visama, we understand that life can be stressful and unwinding is necessary. Here, you can enjoy new skills and rejuvenating creative activities. We recommend painting or making handmade clay pots – activities that can help you relax and rejuvenate.





## Union Of Body & Mind

Visama invites you to embrace your inner peace. Breathe in the fresh air and let your body relax, as you prepare for a day of tranquility and balance. Yoga mats and drinking water are provided to ensure a comfortable and rejuvenating experience for all guests.





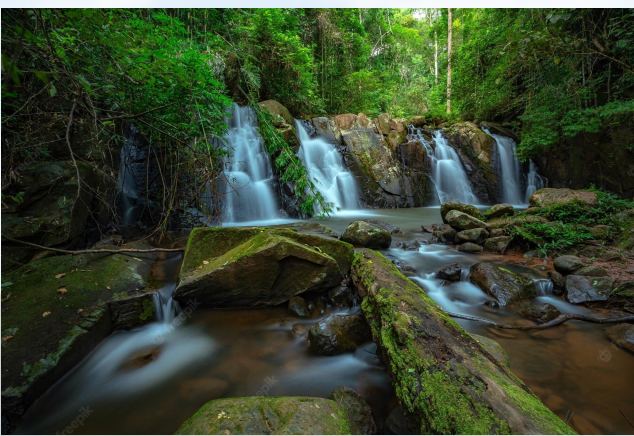
## Tree Planting

We believe in the importance of sustainability and recognize the role of trees in protecting the environment. As such, we are excited to announce our collaboration with the local community to initiate an indigenous tree-planting program to enhance nature. This initiative aims to promote sustainable practices and reduce carbon footprints. With our combined efforts, we want to positively impact the environment and inspire others to do the same. Working together can create a better future for ourselves and future generations. Join us in our mission to protect the planet and create a sustainable future.



# External Experiences

What to do and see when in Nan – part of the ancient Lanna Kingdom of Northern Thailand



**Sapan Waterfall**



**Khun Nan National Park**



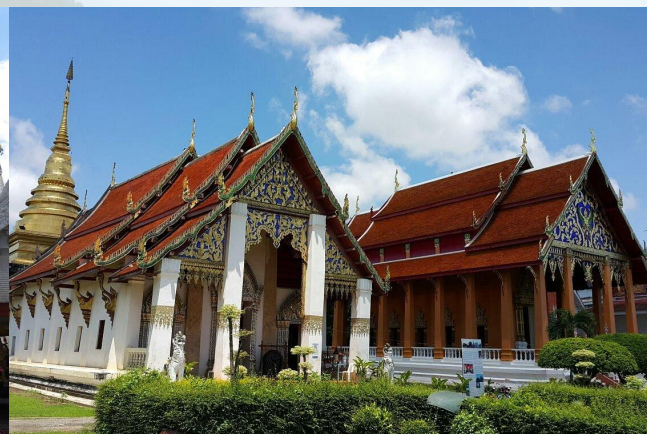
**Doi Phu Kha National Park**



**Sin Thao Rock Salt Pond &  
Bo Kluea Rock Salt Wells**



**Wat Ming Mueang Temple**



**Wat Phra That Chang Kham  
Worawihan**



**Wat Phumin  
(Nan's Most Iconic Temple)**



**Nan Walking Street  
(Kad Khuang Muang Nan)**

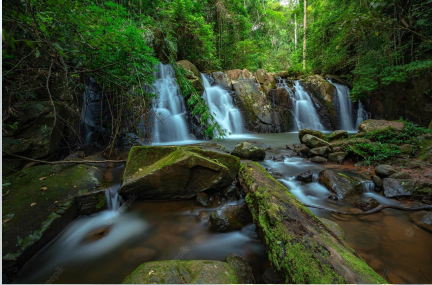
[visamatentedcamps.com](http://visamatentedcamps.com)



# Travel Information



Bo Kluea Salt Wells  
ระยะทาง 25 KM ใช้เวลาเดินทาง 40 นาที



Sapan Waterfall  
ระยะทาง 20 KM ใช้เวลาเดินทาง 30 นาที



Khun Nan National Park  
ระยะทาง 20 KM ใช้เวลาเดินทาง 30 นาที



Doi Phu Kha National Park  
ระยะทาง 45 KM ใช้เวลาเดินทาง 1 ชั่วโมง



Sapan Village  
ระยะทาง 20 KM ใช้เวลาเดินทาง 30 นาที



Wa River Rafting  
ระยะทาง 47 KM ใช้เวลาเดินทาง 1 ชั่วโมง 15 นาที



Nan City Center  
ระยะทาง 90 KM ใช้เวลาเดินทาง 2 ชั่วโมง



Nan Nakhon Airport  
ระยะทาง 95 KM ใช้เวลาเดินทาง 2 ชั่วโมง 10 นาที



# Transportation

**Nan Nakhon Airport (NNT)** is the main gateway to Nan Province, serving domestic travelers year-round. The airport is compact, efficient, and located just 10 minutes from Nan old town. Two major Thai airlines—**Thai AirAsia** and **Nok Air**—operate regular direct flights between **Bangkok (Don Mueang Airport - DMK)** and Nan.

## Flight Frequency (approximate):

- Per day: 3 direct flights
- Per week: 21 flights
- Per month: 90–93 flights

## Airlines Operating to Nan:

- Thai AirAsia (FD) – DMK > NNT
- Nok Air (DD) – DMK > NNT

## Flight Duration:

- Bangkok to Nan: Approx. 1 hour 20 minutes (non-stop)
- Chiang Mai to Nan: No direct commercial flights at the moment (travel by private car or van, approx. 4.5–5 hours)
- Other regions (Phuket, Krabi, etc.): Connecting flights through Bangkok

เวลา	จาก	หมายเลขเที่ยวบิน	สายการบิน
08:50	ดอนเมือง	FD 3554	
10:25	ดอนเมือง	DD 172	
19:05	ดอนเมือง	FD 3558	



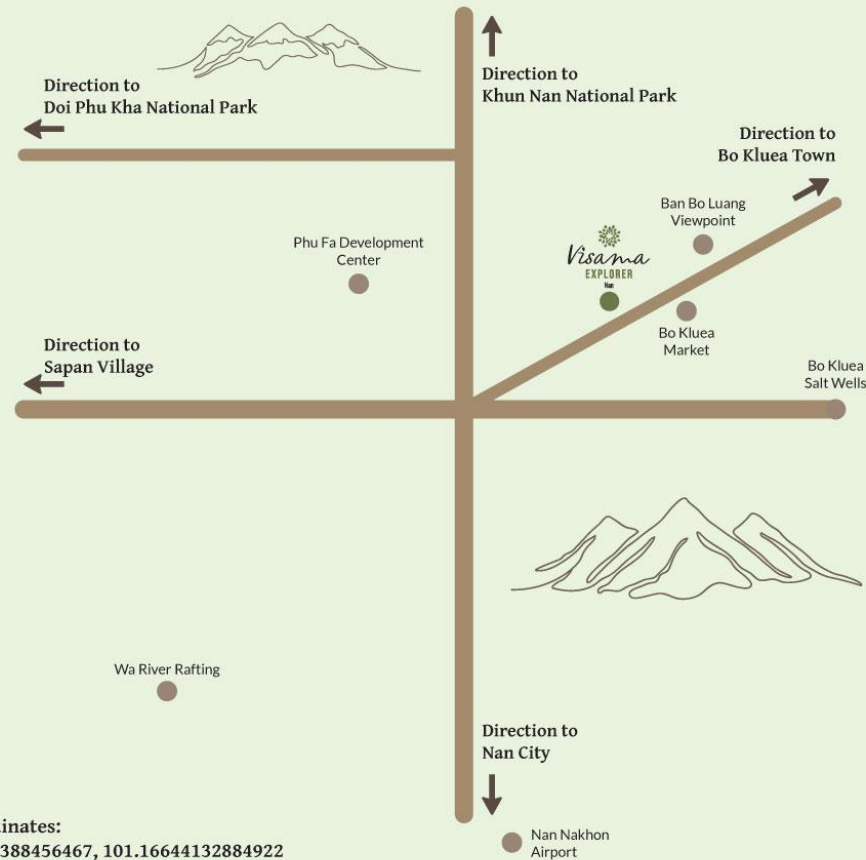
# Getting Here



Visama Explorer Nan is located in Bo Kluea District, tucked deep in the mountains of northeastern Nan province. Our *boutique eco-luxury retreat* is 464 km from Chiang Mai and 781 km from Bangkok. Visama Explorer Nan is an ideal escape into nature for those seeking a remote and meaningful adventure in Thailand.



# In the Area



GPS coordinates:  
19.335469388456467, 101.16644132884922

*Just 30 minutes north of Bo Kluea town, our location offers easy access to nearby cultural and natural attractions while remaining blissfully secluded. It's the perfect base for exploring the hidden beauty of Nan.*



# Resort Setting



*Nestled beside a tranquil creek and surrounded by forested hills, Visama Explorer Nan is completely immersed in nature. The tented camp is designed to blend into the landscape, offering privacy, quiet, and a deep sense of connection with **nature, the culture and the people.***



# Contact Us

**Visama Explorer Nan**

418 Mu 1, Bo Kluea Nuea,  
Bo Kluea District, Nan 55220

**[Resgroup@visamatentedcamps.com](mailto:Resgroup@visamatentedcamps.com)**

**[visamatentedcamps.com](http://visamatentedcamps.com)**



We look forward to welcoming you at



*Visama*

**EXPLORER**

Nan